

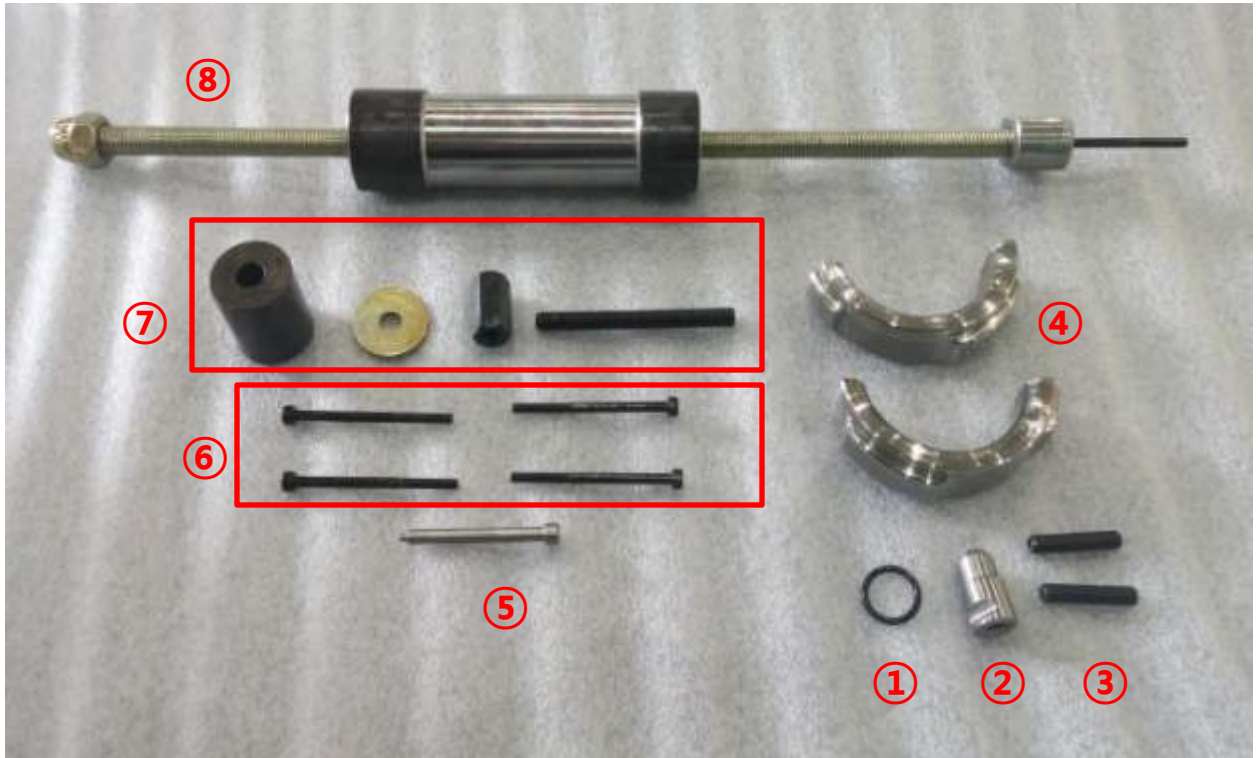
[Dura Wing Bit]

Locking Pin  
Spring Pin

Assemble & Disassemble  
Process

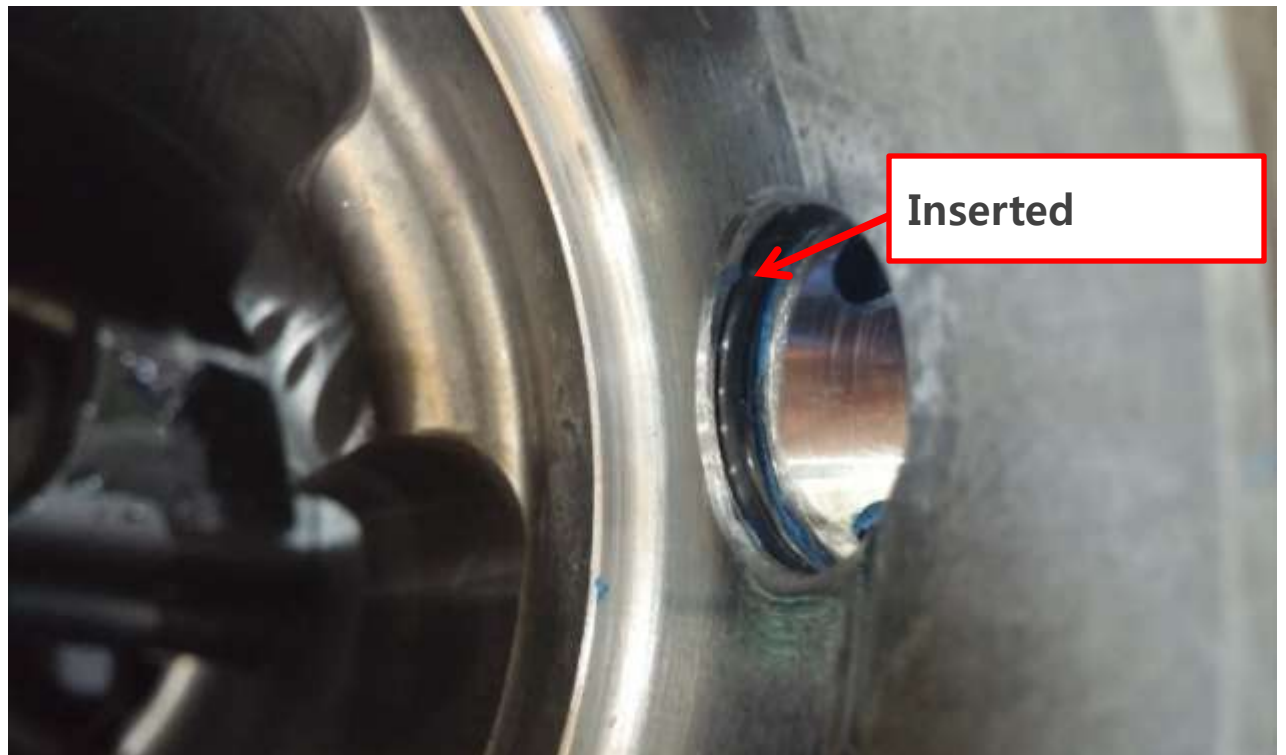
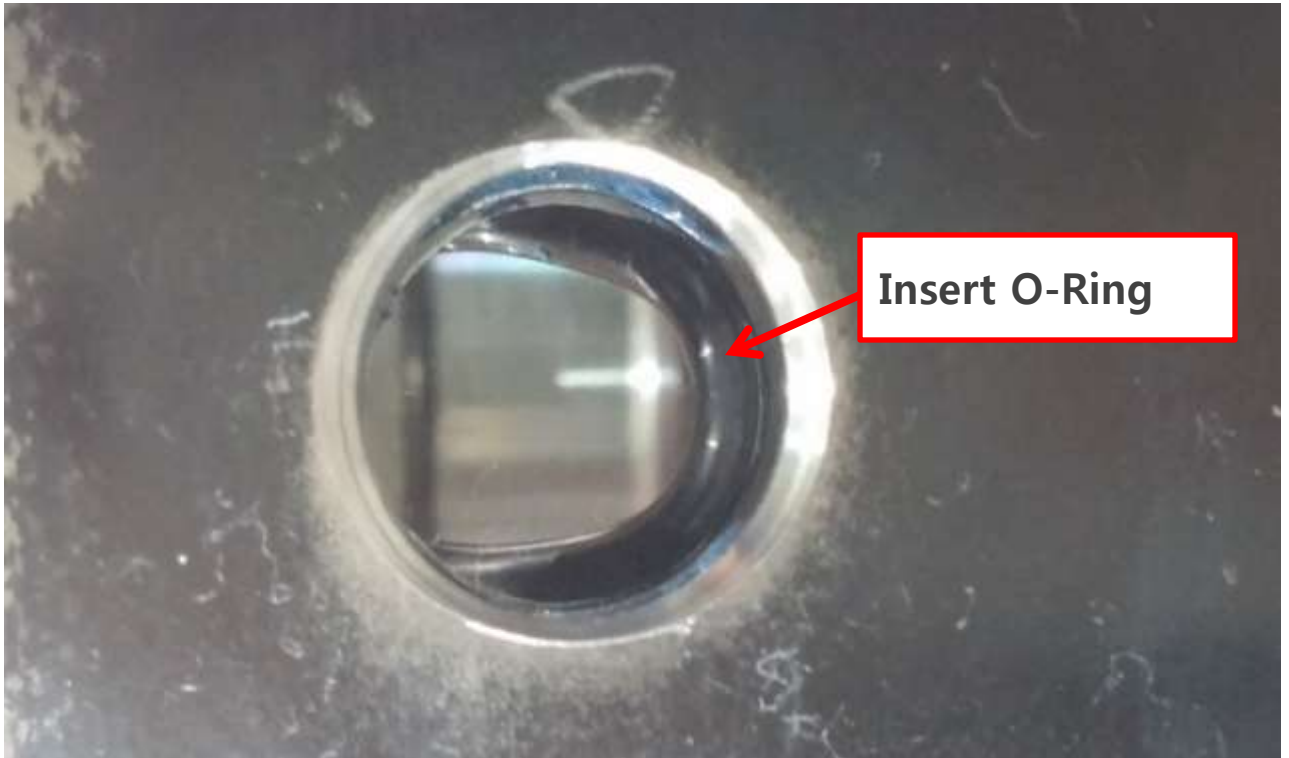
**EVERDIGM**

# 1. Tools for Assemble & Disassemble

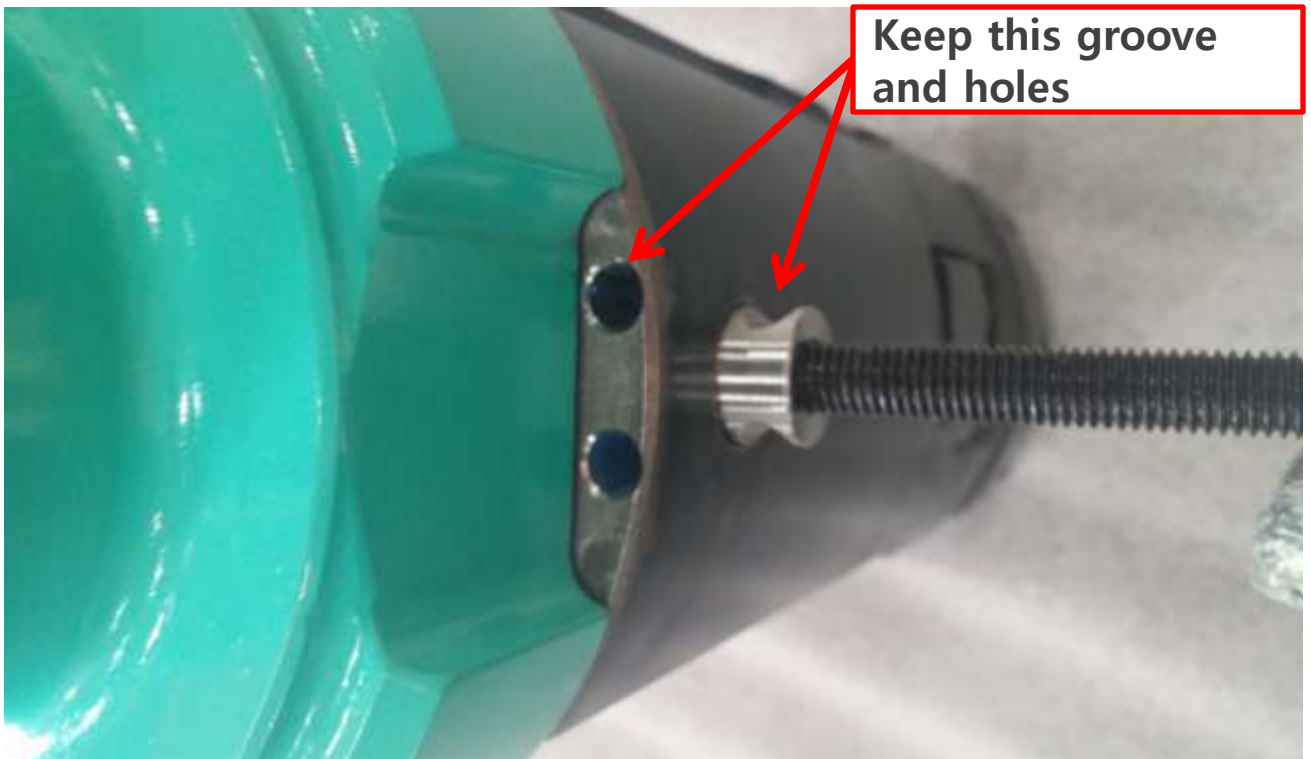


①	O-Ring : to reduce vibration force to Locking Pin
②	Locking Pin
③	Spring Pin
④	Retain Ring
⑤	Tool for nailing of Spring Pin
⑥	Bolt for pulling out Spring Pin
⑦	Tool for Pulling out Locking Pin
⑧	Pulling out device for Spring Pin

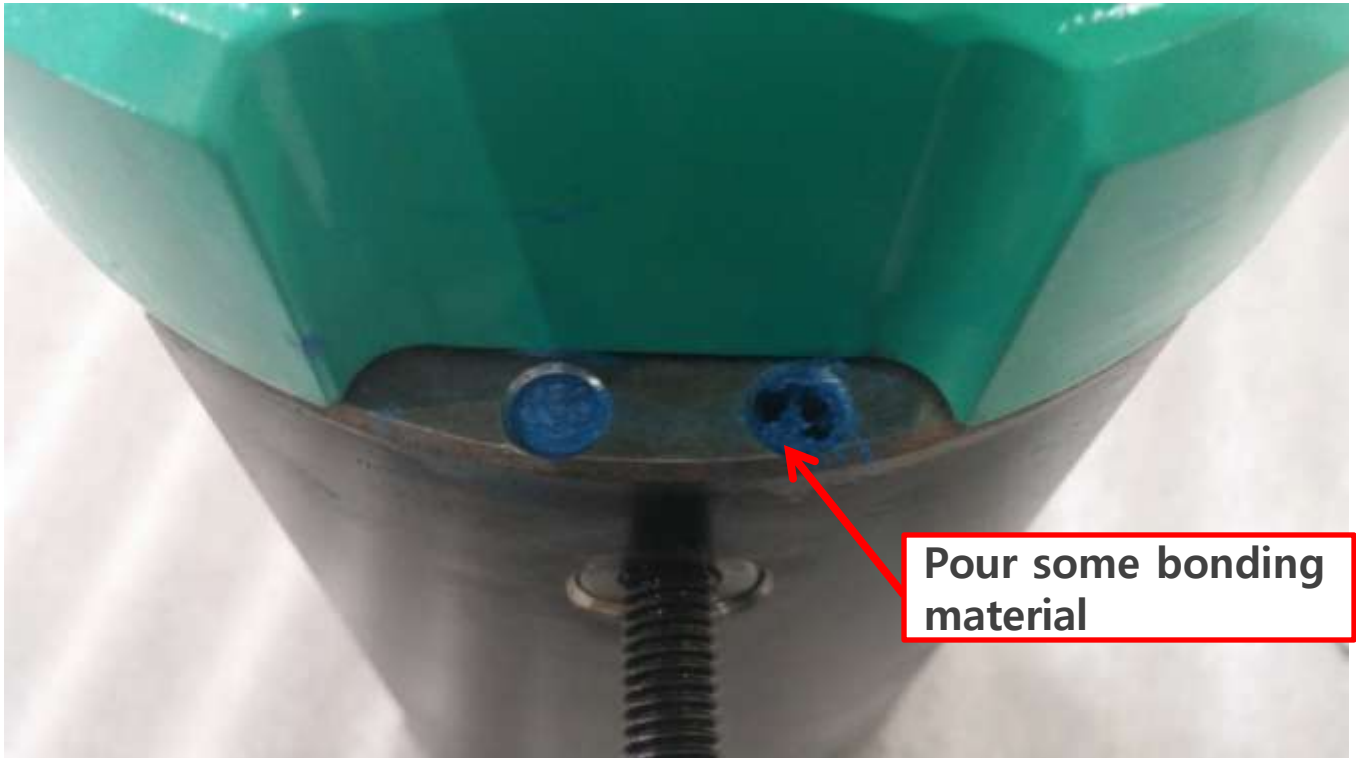
## 2. Put O-Ring



### 3. Assemble G/D & Locking Pin



## 4. Put some bonding liquid

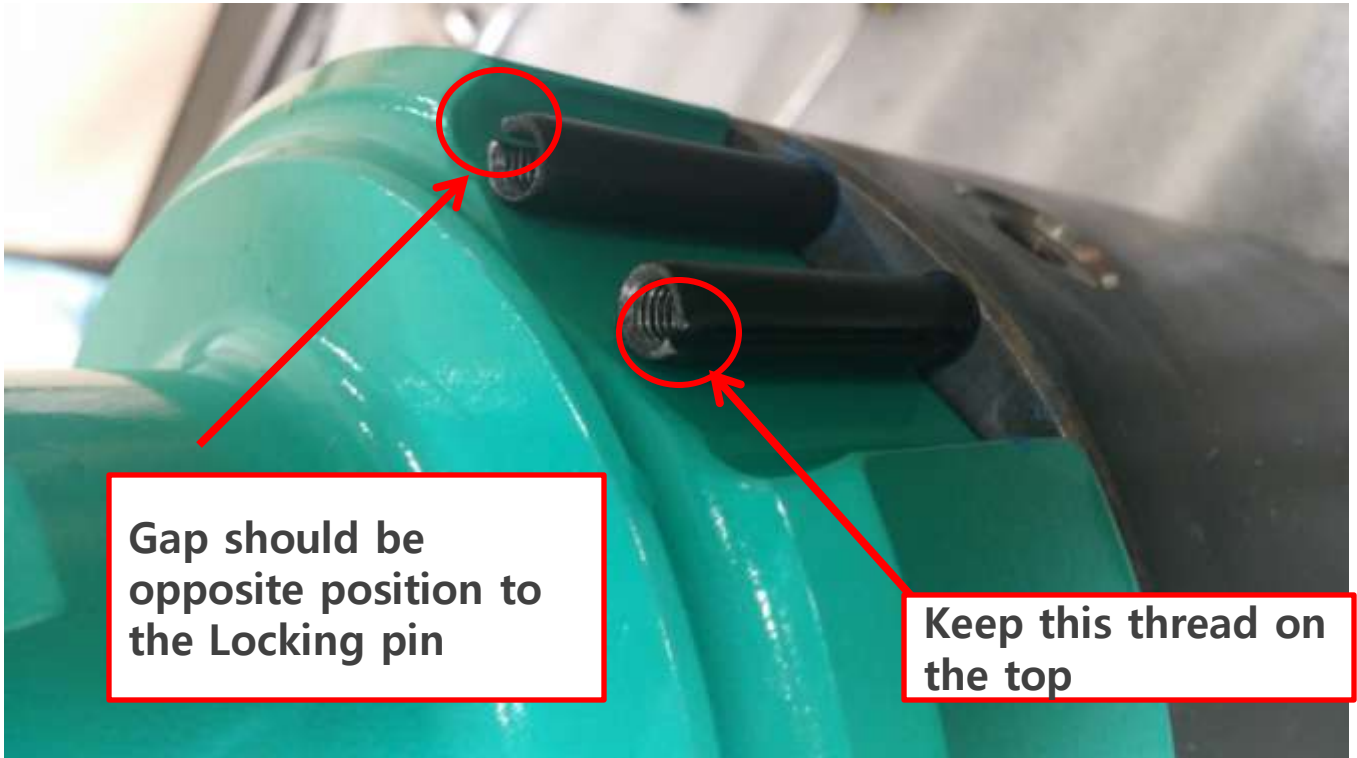


Purpose : to hold Spring Pin tight, but if you don't have you can skip it.

We just used LOCTite 587 – BLUE RTV SILICONE



## 5. Insert Spring Pin



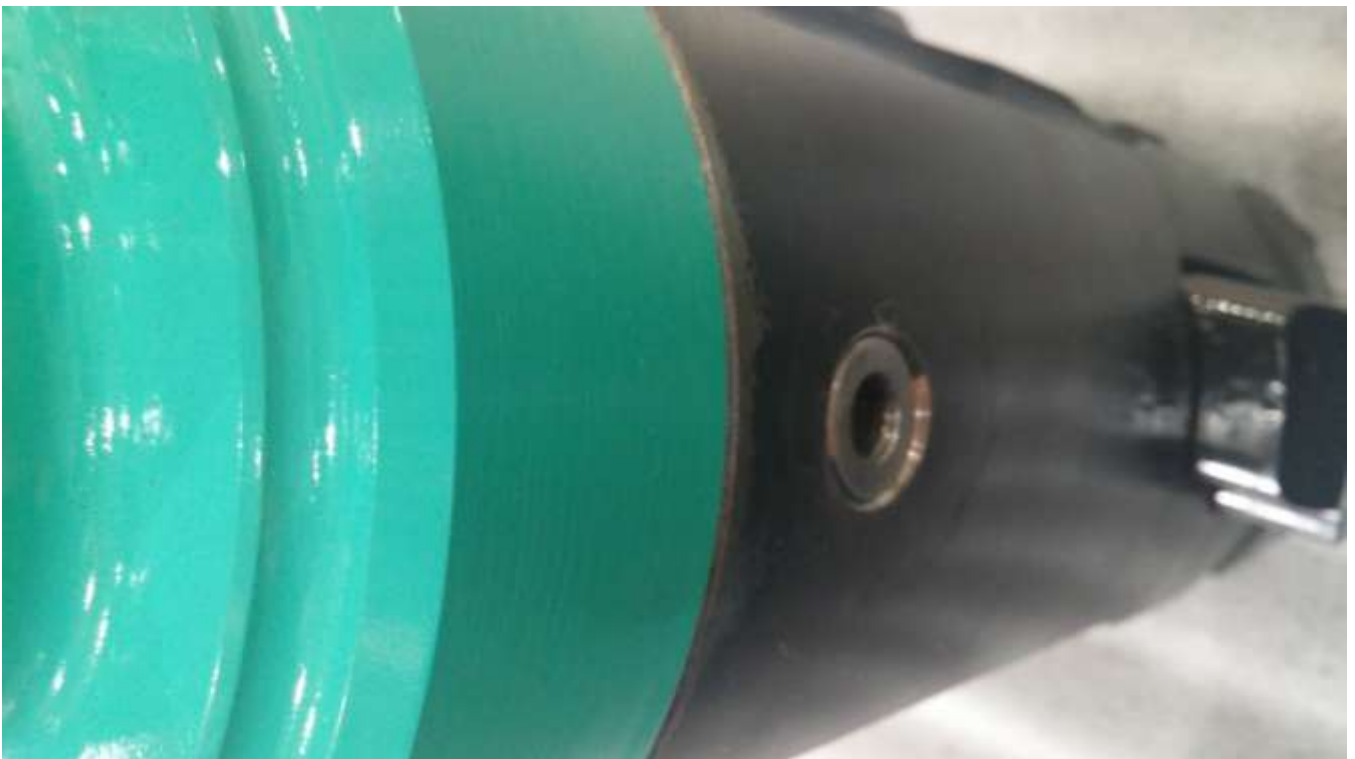
Be careful, when you put Spring Pin, thread need to on the upside.  
When you pull out Spring Pin, you need this thread.



## 6. Nailing Spring Pin



# 7. Finish Assemble





# Disassemble

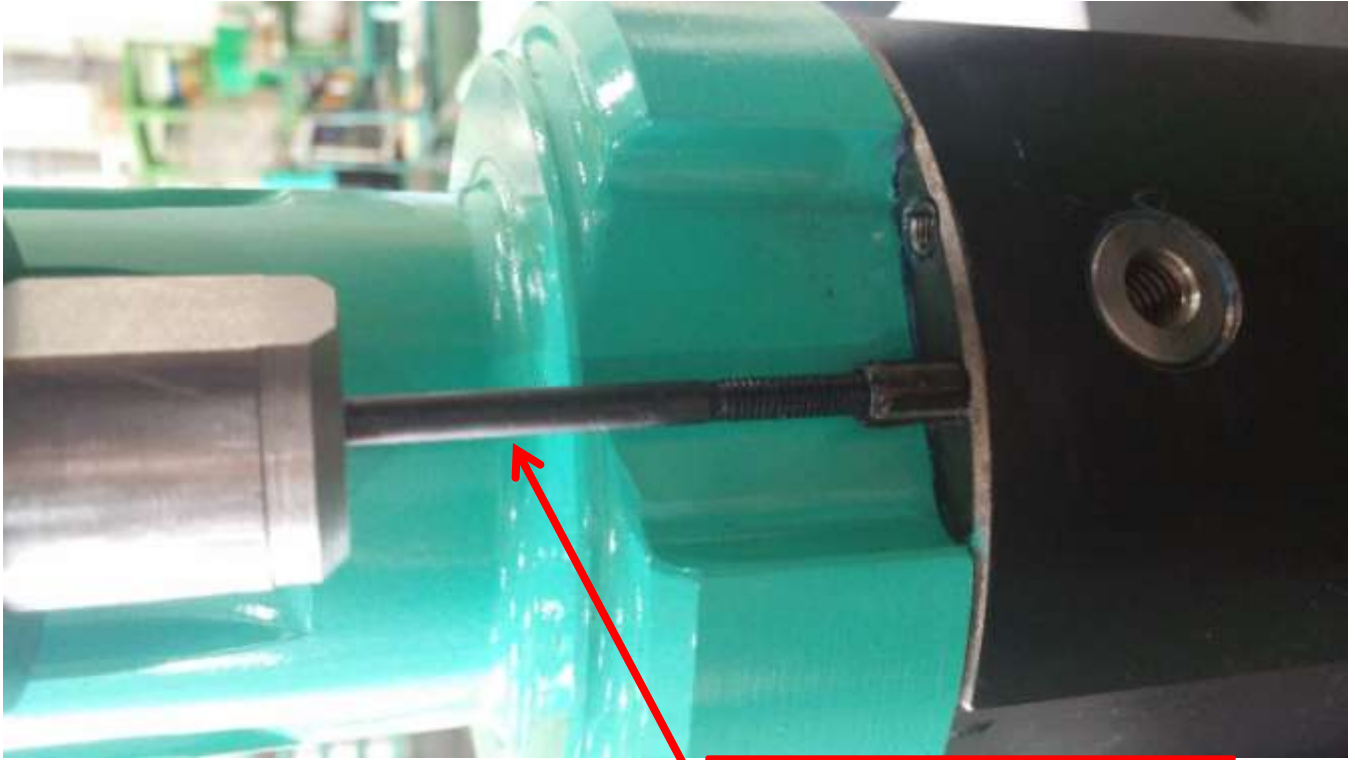
## 8. How to use tools



Hammering handle

1	Connect ⑥ to ⑧
2	Connect ⑥ into thread of Spring Pin
3	Hit the hammering handle to pull out

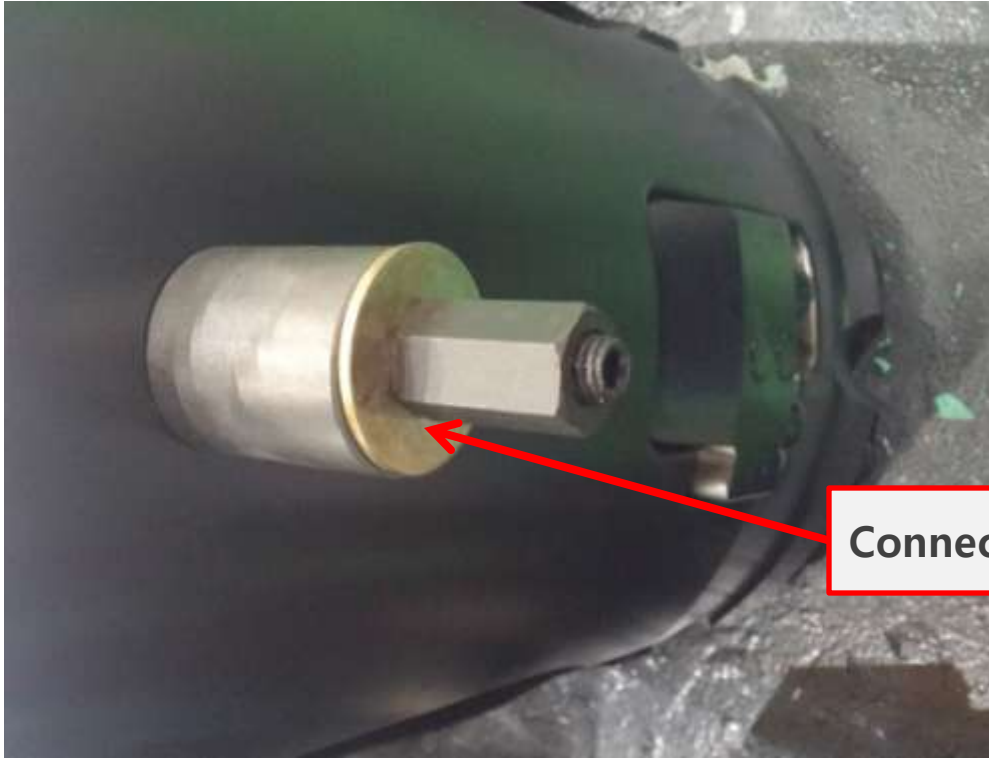
## 9. Beginning of pulling out Spring pin



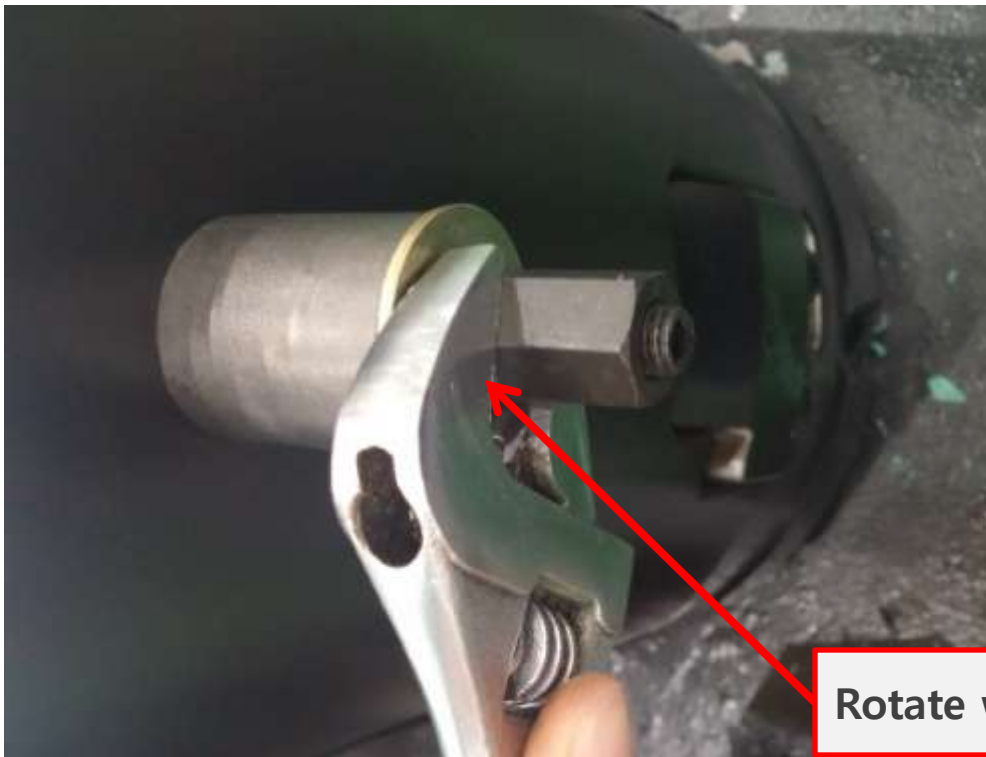
Be careful not to bend



# 10. Pulling out Locking Pin



Connect ⑦



Rotate with Spanner

# Thank You

